



# RMK COLLEGE OF ENGINEERING AND TECHNOLOGY

## DEPARTMENT OF COMPUTER SCIENCE AND ENGINEERING

### A Webinar on

## How and where the real world is using AI and ML

**Convenor:** Dr.Paulraj. D HOD/CSE

**Coordinators:** Dr.Vigilson Prem. M Prof/CSE

Ms.Indra priyadharshini S AP/CSE

**Resource Person:** Mr Dinesh Kumar K(2014-18 alumni) project Engineer ,Wipro Ltd.

**Date and duration:** 11/05/2020 4-5 pm

**Platform used:** Artificial Intelligence and Machine Learning

**Target Audience:** II and III CSE

**Topics covered:** Applications of AI such as Poultry, social distancing etc

**Areas covered:** Artificial distance applications in the real world

### Introduction

AI refers to the simulation of human intelligence in machines that are programmed to think like humans and mimic their actions. The actions depend on the clue of the brain.

The brain is clearly the central computers, which controls all the functions of the body. Our human body is well organised by the cue given by the brain. If something went wrong in the body, the brain is often the first thing to be affected and the last thing to improve.

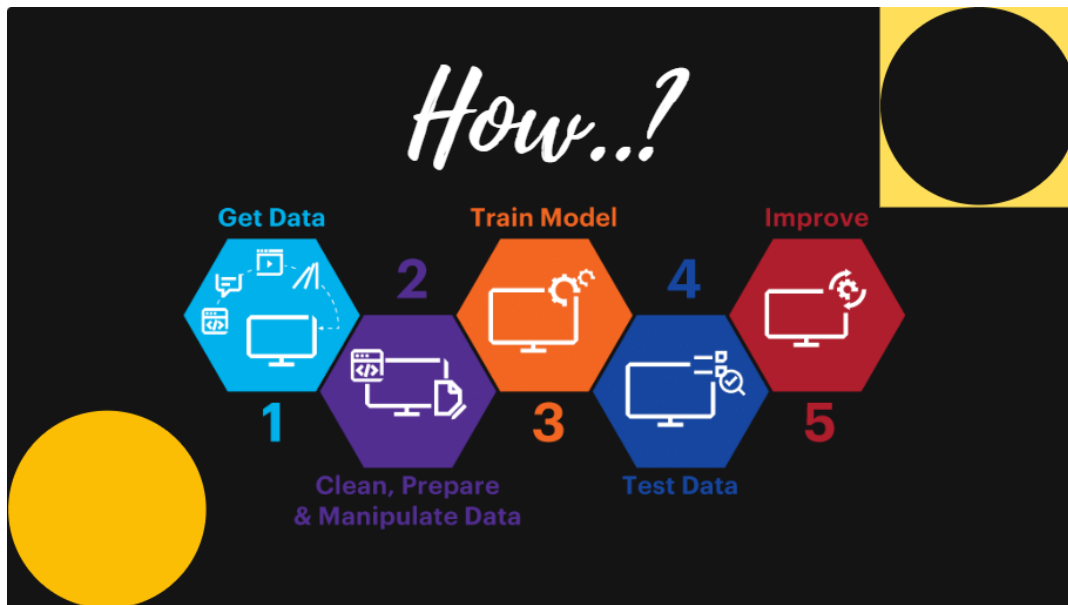


## General Objectives:

At the end of the webinar, the participants are able to develop awareness on the trends and updates of Artificial Intelligence and Machine Learning.

## Specific Objectives:

- \*To be familiar with the latest trends and applications of AI.
- \*Identify the responsibilities of the human and can be alternatively used by the machine.



## Why we are going for AI

Normally AI cannot replace a human but to make us feel better.

- To automate Routine work.
- To improve performance and efficiency.
- To manage and organise large data.



## What does it represent?

- ✓ Data Science produces **Insights**.
- ✓ Machine learning produces **predictions**.
- ✓ Artificial Intelligence produces **Actions**.

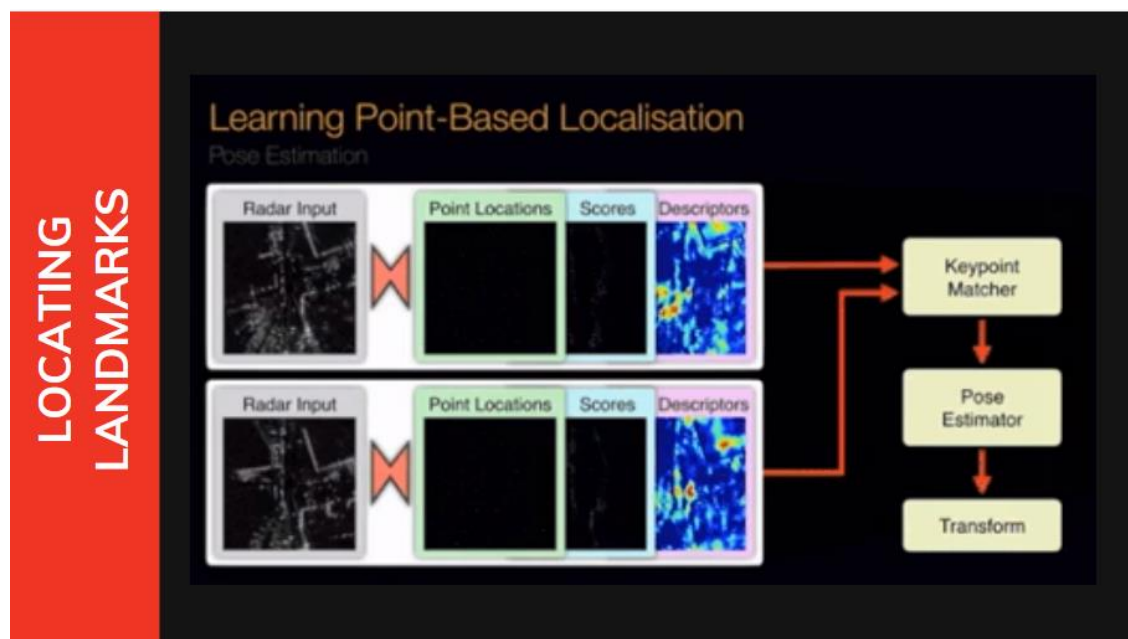
## Where we are using AI:

- ❖ Agriculture
- ❖ Social Distancing
- ❖ Health Care
- ❖ Film Industry
- ❖ Banking and Finance etc.

In the webinar the resource person has relied on the locating landmarks, AI powered poultry farm, Bio-toilet etc.

## Locating Landmarks:

A Landmark is a recognizable natural or artificial feature used for navigation, a feature that stands out from its near environment and is often visible from long distances. In this we are giving the radar as input and it is processed to get the final landmark position.





## AI Powered Poultry:

The poultry farm is one of the leading farms in the country. Many advanced technologies are used to increase the productivity in the farm such as chicks, eggs, etc.

Also used to monitor the chicks are infected, if so provide medicine in the earliest stage.



## Neural Net Bathroom:

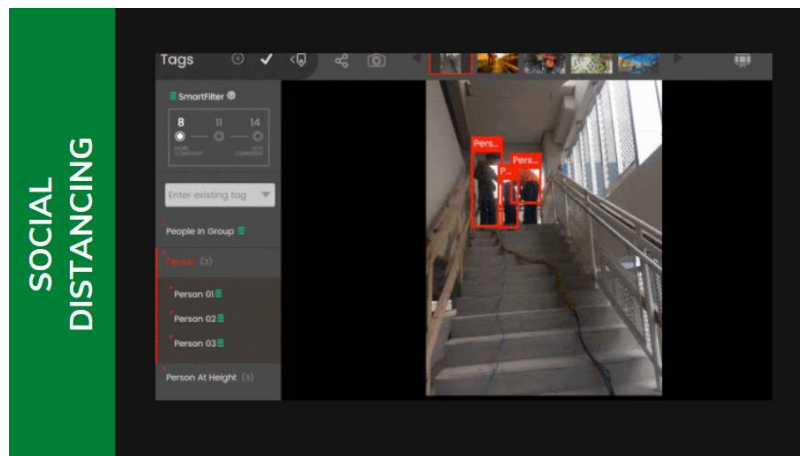
In this, we can teach the bathroom for its adjustability such as folding, flushing the water, adjusting the positions etc.





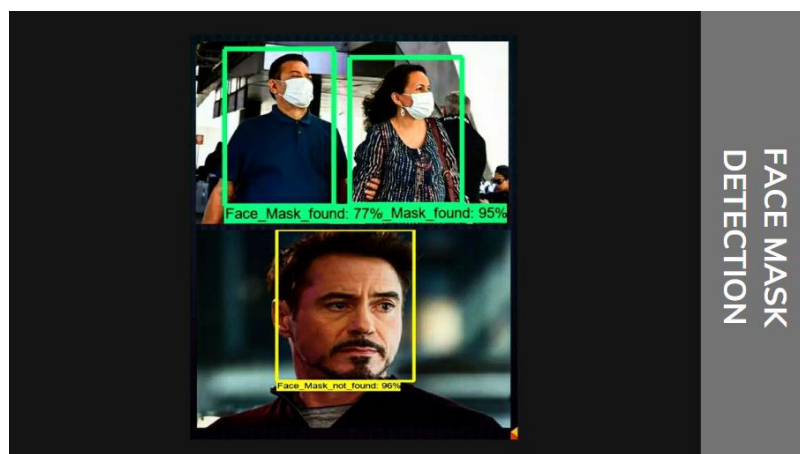
## Social Distancing:

It is the major protocol need to be followed during the pandemic of COVID-19. By adhering this we can avoid infectious diseases outbreak through sneezing, coughing etc. The sensor monitors the social distance between two persons or among the crowd and makes alertness.



## Face Mask detection:

During COVID-19 the government instructed all the people should wear face-mask to avoid the epidemic. In this, the sensor will identify either the person is wearing the face-mask or not. We just give the input as the face image and it should be identified with good precision.





## Feedback:

1. Kishore J of III year CSE reveals that the session is very informative and he can apply this AI concept in his project and make new innovation to the real world.
2. Ramya K of III year CSE disclose that this webinar is very good and more practical in the real world.

## Conclusion:

The webinar seems good and disclosed new ideas among the students to create new projects applicable to real world necessities. In medical field AI plays a vital role to serve the patients and also in determination of diseases.